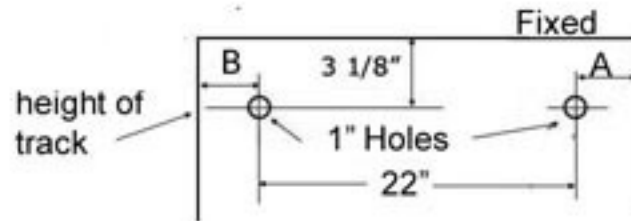
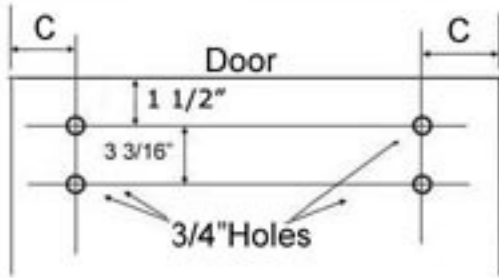


Instructions for Direct Roller Shower Door System

Track Mounting Height = Fixed Panel height minus $2 \frac{15}{16}$
= Door Height - $2 \frac{3}{4}$ "



Bottom Guide

The Bottom Guide is 2" so the overlap should be 2"

Glass width is (Opening - $\frac{5}{16}$) / 2 + 1

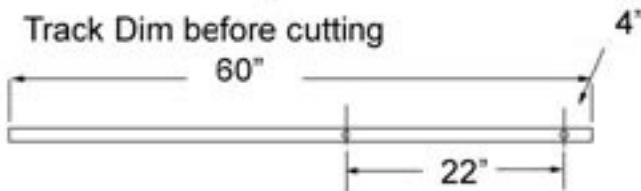
$\frac{3}{8}$ " gap under Door

$\frac{3}{16}$ " Gap under fixed for U-Channel

Top of both panels is $3 \frac{1}{8}$ " above Track CL.

Door Height = Track height + $2 \frac{3}{4}$ " or height of top edge of glass minus $\frac{3}{8}$ "

Panel Height = Track height + $2 \frac{15}{16}$ " or height of top edge minus $\frac{3}{16}$ "



Track length = Opening Width minus 1"
End with holes may need cutting to center holes in fixed panel.

Fixed Panel and Track Hole Locations: First Hole in the uncut track will be at $4 \frac{1}{2}$ " from the wall. Because there is a $\frac{1}{8}$ " gap between fixed and tile on the side, the first hole in the glass would be at $4 \frac{3}{8}$ " from the edge of the glass. The next hole would be 22" later. Plus another $4 \frac{3}{8}$ " = $30 \frac{3}{4}$ " fixed panel width. So $A = B = 4 \frac{3}{8}$ ". This corresponds to $59 \frac{13}{16}$ " opening width. However if $A \neq B$ then openings up to 61 are possible.

FOR OPENINGS $59 \frac{13}{16}$ " or less $A=B=C = (\text{Panel Width} - 22) / 2$

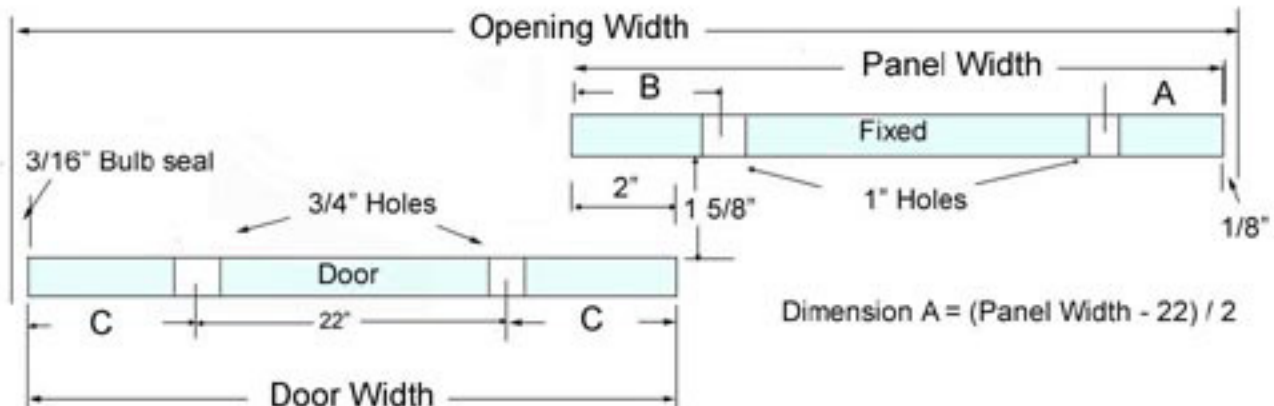
TRACK CUTTING: Distance from end of track to first hole = $(\text{Panel width} - 22) / 2 - \frac{3}{8}$ "

Track overall length is Opening Width minus 1"

FOR OPENINGS $59 \frac{13}{16}$ " to 61": First hole in fixed panel is $4 \frac{3}{8}$ " from edge. Second hole is 22" further.

TRACK CUTTING: Don't cut the end with holes. Cut track to length = opening minus 1".

Note: A, B and C must be greater than 2" or the Glass mount hanger hits the end of track to wall hanger.



Dimension A = $(\text{Panel Width} - 22) / 2$